

# STRIP LED CUSTOM FLEX 1616

*FLEX CUSTOM LED STRIP 1616 - CUSTOM*

ART: FL1616/65 CUSTOM

**Destinazione d'uso | Use:**

Interni / esterni | *Indoor / Outdoor*

**Installazione | Installation:**

Fissaggio Parete / Plafone | *Wall / ceiling fixing*

**Fissaggio | Fixing:**

Con staffa fissa da 5cm o profilo da 2mt  
*With 5cm fixed bracket or 2mt profile*

**Corpo / Struttura | Body / Structure:**

PVC e Silicone | *PVC and Silicone*

**Alimentatore | Power Supply:**

Non incluso da ordinare separatamente  
*Not included to be ordered separately*

**LED a scelta tra | LED choice between:**

SL24, SL60, SL120, SL120ES, SL180, SL200ES, RGB  
MONOCROMATICA, BIANCO DINAMICO, 48 VOLT  
*SL24, SL60, SL120, SL120ES, SL180, SL200ES, RGB  
MONOCHROMATIC, DYNAMIC WHITE, 48 VOLT*

Tensione | **Voltage:** ..... 12/24 Vdc

Fascio | **Beam:** ..... Simmetrico diffondente 120°  
*Symmetrical 120° wide beam*

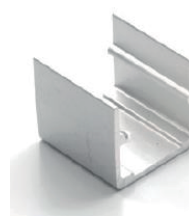
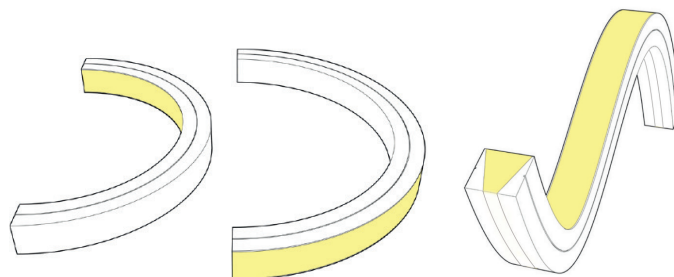
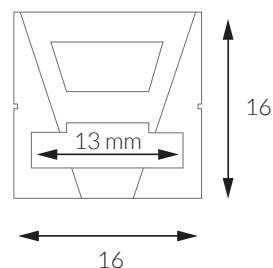
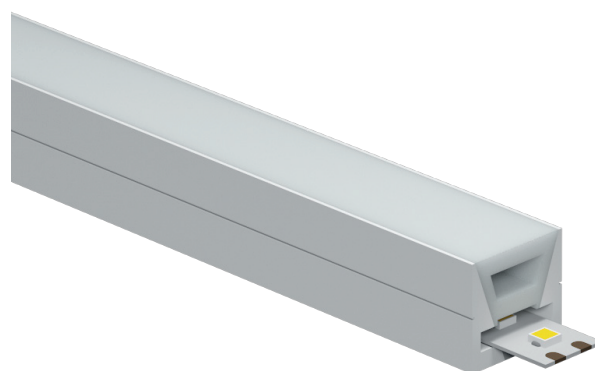
Classe Isolamento | **Insulation Class:** Classe 3 | *Class 3*

Peso | **Weight:** ..... 0,260 gr

Grado IP | **IP rating:** ..... 65

Lunghezza Massima | **Max Length:** 20 metri | *20 meters*

Tipo LED | **LED Type** ..... SMD LED



FL1616CL



PR120