

STRIP LED CUSTOM FLEX 916

FLEX CUSTOM LED STRIP 916 - CUSTOM

ART: FL916

Destinazione d'uso | Use:

Interni / esterni | *Indoor / Outdoor*

Installazione | Installation:

Fissaggio Parete / Plafone | *Wall / ceiling fixing*

Fissaggio | Fixing:

Con staffa fissa da 5cm o profilo da 2mt
With 5cm fixed bracket or 2mt profile

Corpo / Struttura | Body / Structure:

Silicone | *Silicone*

Alimentatore | Power Supply:

Non incluso da ordinare separatamente
Not included to be ordered separately

LED a scelta tra | LED choice between:

SL24, SL60, SL120, SL120ES, SL180, SL200ES, RGB
MONOCROMATICA, BIANCO DINAMICO, 48 VOLT
*SL24, SL60, SL120, SL120ES, SL180, SL200ES, RGB
MONOCHROMATIC, DYNAMIC WHITE, 48 VOLT*

Tensione | **Voltage:** 12/24/48 Vdc in base alla strip scelta

Fascio | **Beam:** Simmetrico diffondente 120°
Symmetrical 120° wide beam

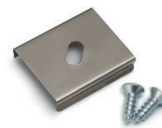
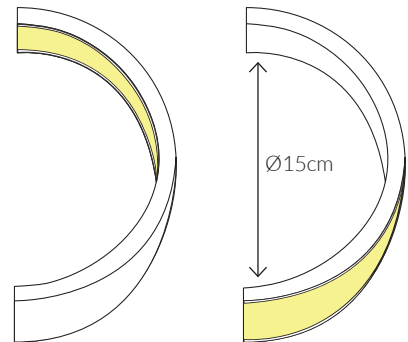
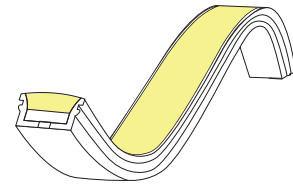
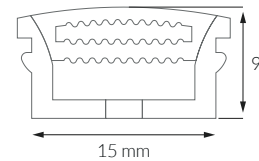
Classe Isolamento | **Insulation Class:** Classe 3 | *Class 3*

Peso | **Weight:** 0,260 gr

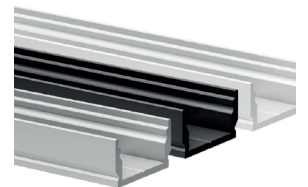
Grado IP | **IP rating:** 65

Lunghezza Massima | **Max Length:** 20 metri in base alla strip scelta

Tipo LED | **LED Type** SMD LED



EN916



PR115