

STRIP LED CUSTOM FLEX 1018

FLEX CUSTOM LED STRIP 1018 - CUSTOM

ART: FL1018/65 CUSTOM

Destinazione d'uso | Use:

Interni / esterni | *Indoor / Outdoor*

Installazione | Installation:

Fissaggio Parete / Plafone | *Wall / ceiling fixing*

Fissaggio | Fixing:

Con staffa fissa da 5cm o profilo da 2mt

With 5cm fixed bracket or 2mt profile

Corpo / Struttura | Body / Structure:

PVC e Silicone | *PVC and Silicone*

Alimentatore | Power Supply:

Non incluso da ordinare separatamente

Not included to be ordered separately

LED a scelta tra | LED choice between:

SL24, SL60, SL120, SL120ES, SL180, SL200ES, RGB

MONOCROMATICA, BIANCO DINAMICO, 48 VOLT

SL24, SL60, SL120, SL120ES, SL180, SL200ES, RGB

MONOCHROMATIC, DYNAMIC WHITE, 48 VOLT

Tensione | **Voltage:** 12/24 Vdc

Fascio | **Beam:** Simmetrico diffondente 120°
Symmetrical 120° wide beam

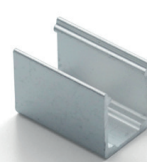
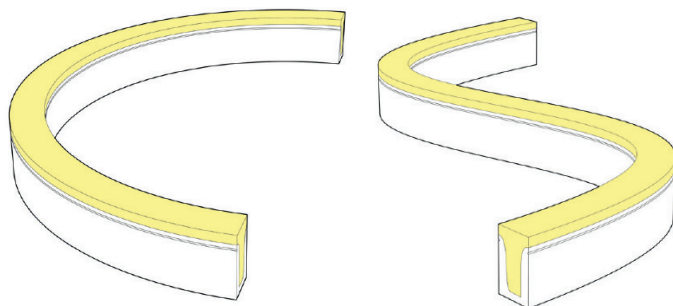
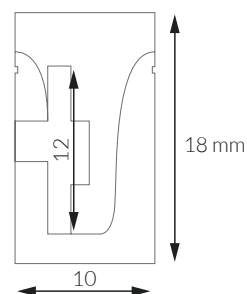
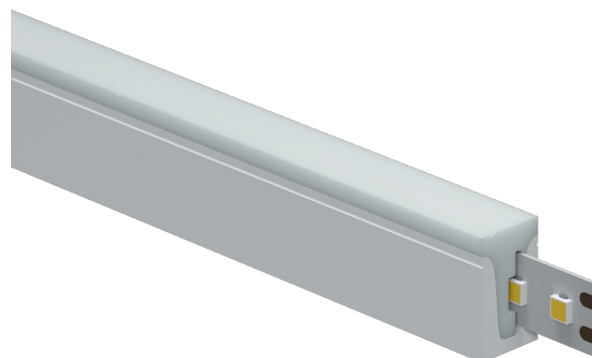
Classe Isolamento | **Insulation Class:** Classe 3 | *Class 3*

Peso | **Weight:** 0,260 gr

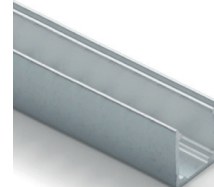
Grado IP | **IP rating:** 65

Lunghezza Massima | **Max Length:** 8 metri | *8 meters*

Tipo LED | **LED Type** SMD LED



FL2220CL



FL220CL2